

APPENDIX: TDM AMENDMENT MEMORANDUM



Technical Memorandum

DATE: January 31, 2024
FROM: Sonia Perez, El Paso MPO
TO: Genevieve Bales, FHWA

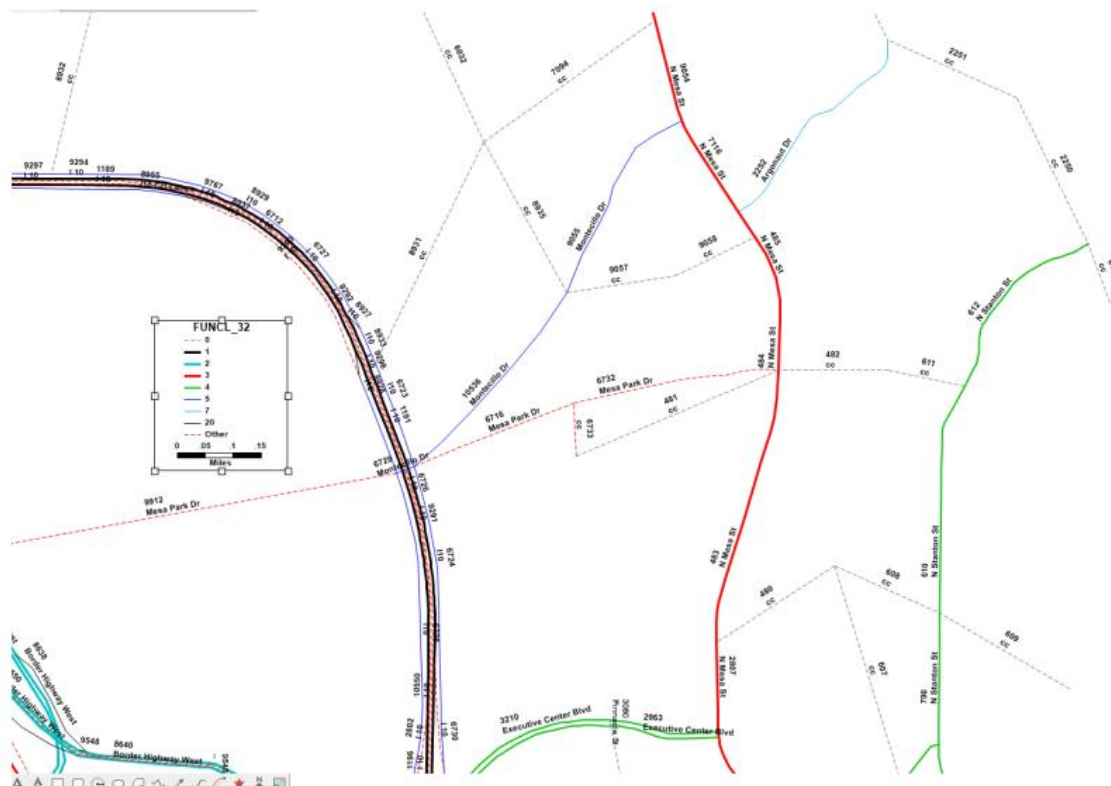
CC: Jose Campos, Barbara Maley
RE: RMS 2050 MTP Amendment – Network coding

The following are the addition/changes made to the TDM to reflect the RMS 2050 Amendments. Please refer to information in the attribute filed. “**AMED_EDIT**” for description of edits. The link ID numbers listed in the memo correspond to the **ID** attribute in the shapefile not the FID. This technical memorandum needs to be used in conjunction with the attached excel matrix “**RMS2050_AmendTrackID**”.

1.- Mesa Park Dr. from I-10 to Mesa (Project ID: A126 X-CAP)

Amendment: Project was replaced by Montecillo Blvd. Extension from I-10 Frontage Road North to Montecillo Blvd. Same network year, number of lanes and functional classification. The only change was the alignment. The connection at IH-10 remains the same.

Link IDs 6732 and 6716 were removed/deactivated. Centroid connector ID 6733 was replaced with centroid connector ID 481. New link 10536 was added as the Montecillo Dr. Extension.



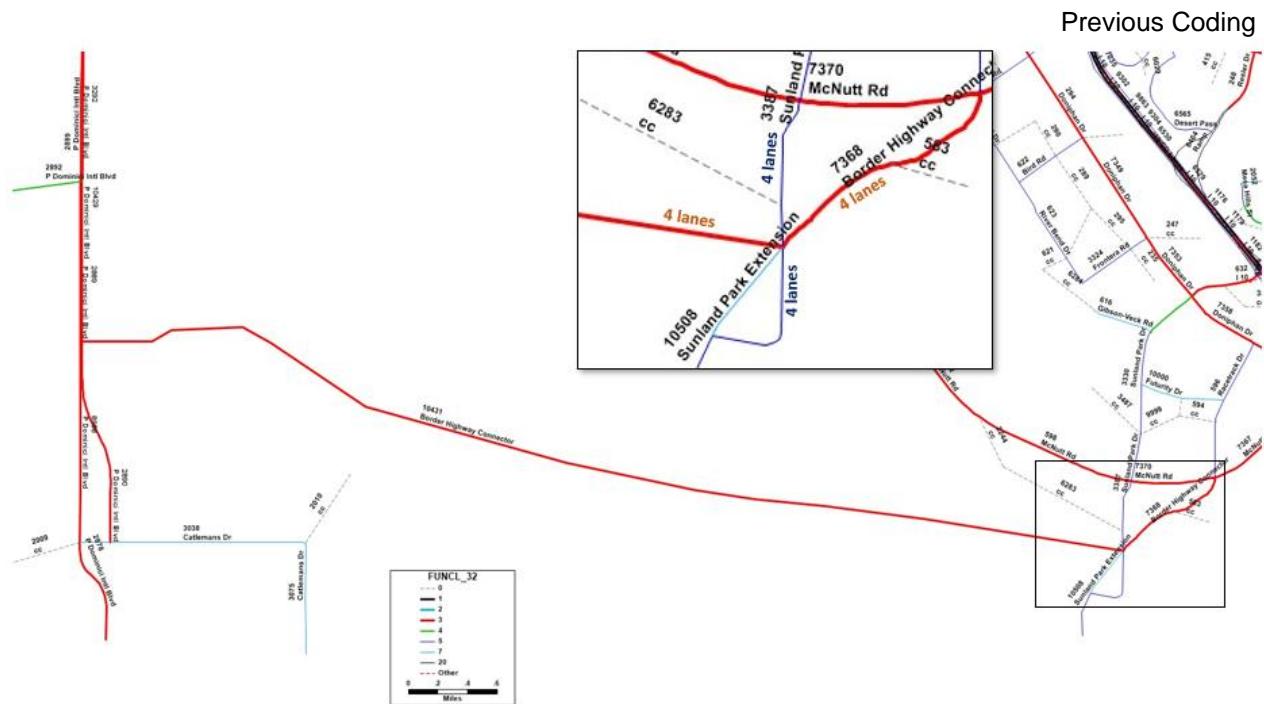
2.- St. Francis Drive Extension from Pete Domenici Memorial Hwy (NM 136) to Sunland Park Extension (Project ID2: A606X)

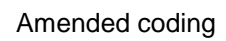
Amendment: *St. Francis Drive Extension* project will be amended to become the Border Highway Connector (BHC) – Construction Phase project. This amendment includes increasing the total number of lanes from 2 to 4 lanes as well as changing the projects limits to extend from NM 136 to NM 273.

~~Links IDs 585,7368,10431 were updated to reflect the changes in number of lanes and limits of the project. Link ID 10601 was added to make connection to Pete Domenici South Bound Lanes.~~

Links IDs 586, 7372, 10431 were updated to reflect the changes in number of lanes and limits of the project. Link ID 10601 was added to make connection to Pete Domenici South Bound Lanes.

Link IDs 585 and 7368 are related to project R615X NM 498 (Anapra Rd), and no longer part of the Border Highway Connector. Link IDs 586 and 7372 are now related to A606X (BHC). This does not affect conformity as the number of lanes is not changing.

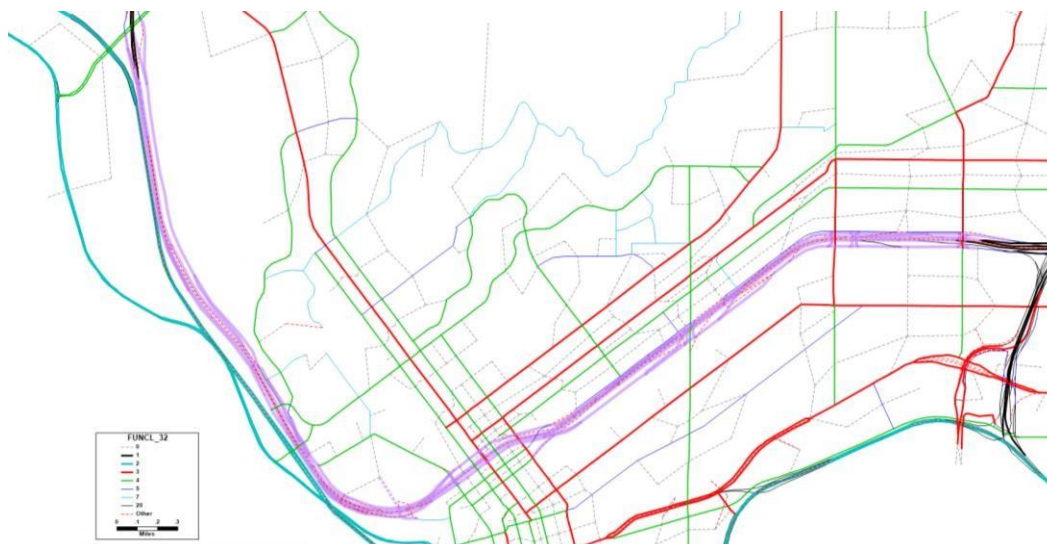




3.- IH-10 Downtown from Executive Center to SL478 Copia St. (Project ID: I063X-CAP)

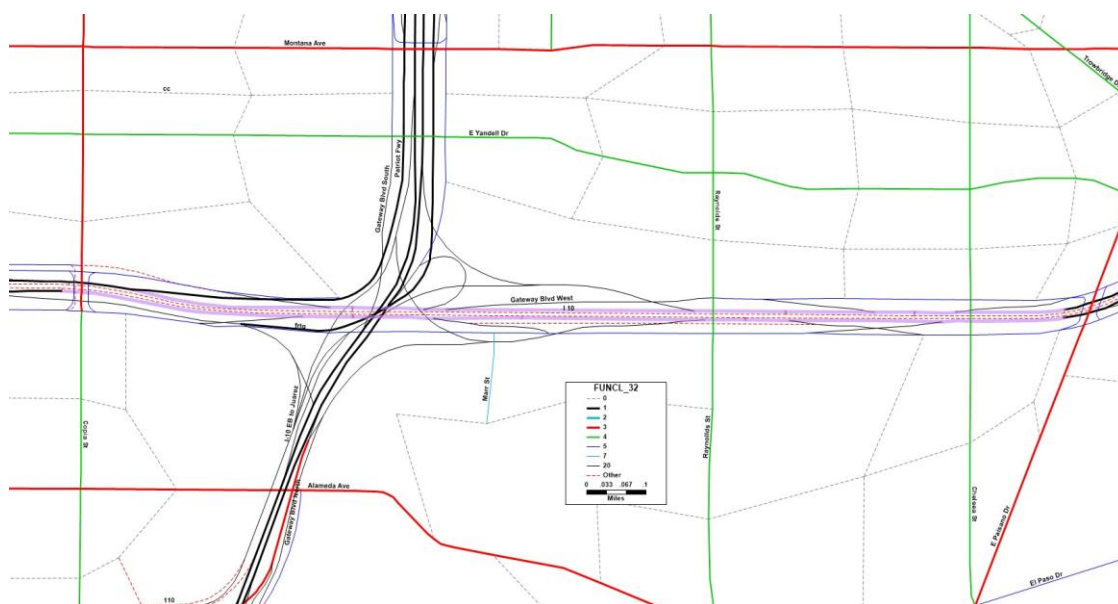
Amendment: Project was modified to remove previously coded adaptive lanes and detail code frontage roads and ramps to follow preferred alternative and based on the provided 60 % schematics. [IH10 ALT I SCH 60P.pdf](#)

A total of 188 links were modified. Please refer to the network attributes or the excel matrix for detail information on each link.



4.-IH-10 Segment 3A from Copia to Paisano (Project ID: I064X-CAP)

Amendment: Project was modified to remove previously coded adaptive lanes. A total of 14 links were modified. Please refer to the network attributes or the excel matrix for detail information on each link.



5.- IH-10 Segment 3B from Paisano to Airway (Project ID: I065X-CAP)

Amendment: Project was modified to remove previously coded adaptive lanes. A total of 12 links were modified. Please refer to the excel matrix for detail information on each link.

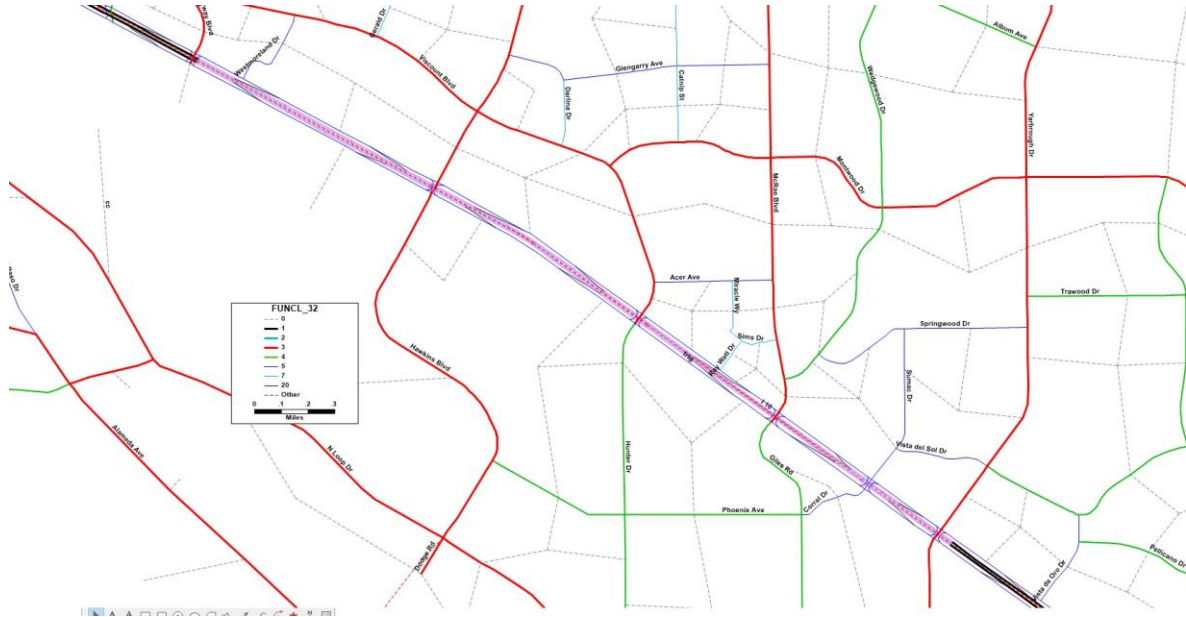


6.-IH-10 Segment 1G from Thorn to Executive (Project ID2: I067X-CAP)



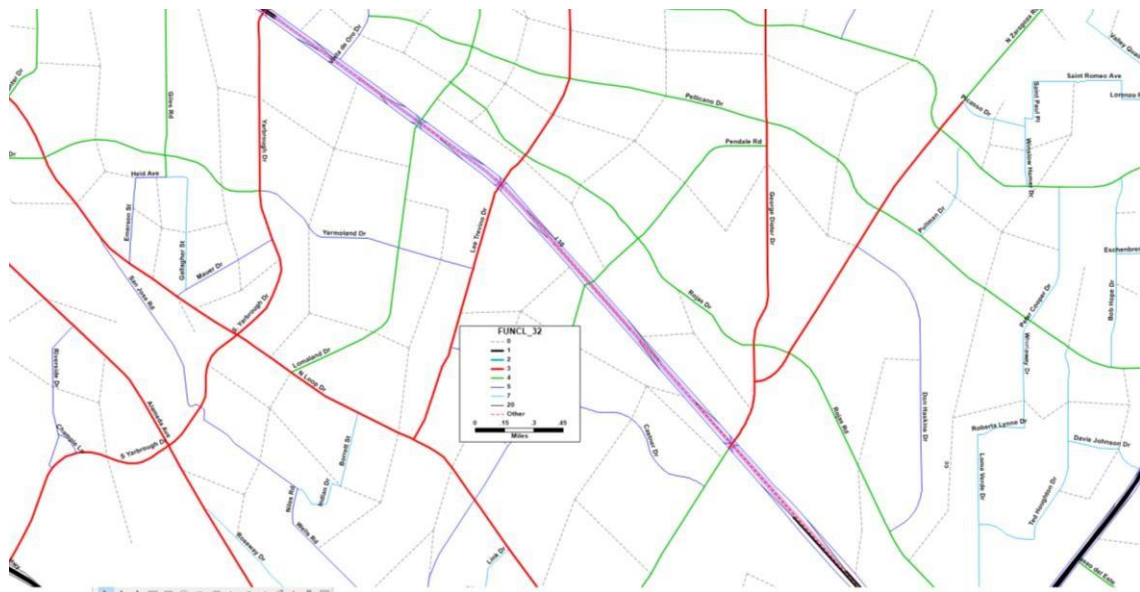
7.- IH-10 Segment 3C from Airway to Yarbrough (Project ID: I068X-CAP)

Amendment: Project was modified to remove previously coded adaptive lanes. A total of 18 links were modified. Please refer to the excel matrix for detail information on each link.



8.-IH-10 Segment D1 from Yarbrough to FM659 (Project ID: I069X-CAP)

Amendment: Project was modified to remove previously coded adaptive lanes. A total of 18 links were modified. Please refer to the excel matrix for detail information on each link.



9.- IH-10 Segment D2 from FM659 to Eastlake (Project ID: I070X-CAP)

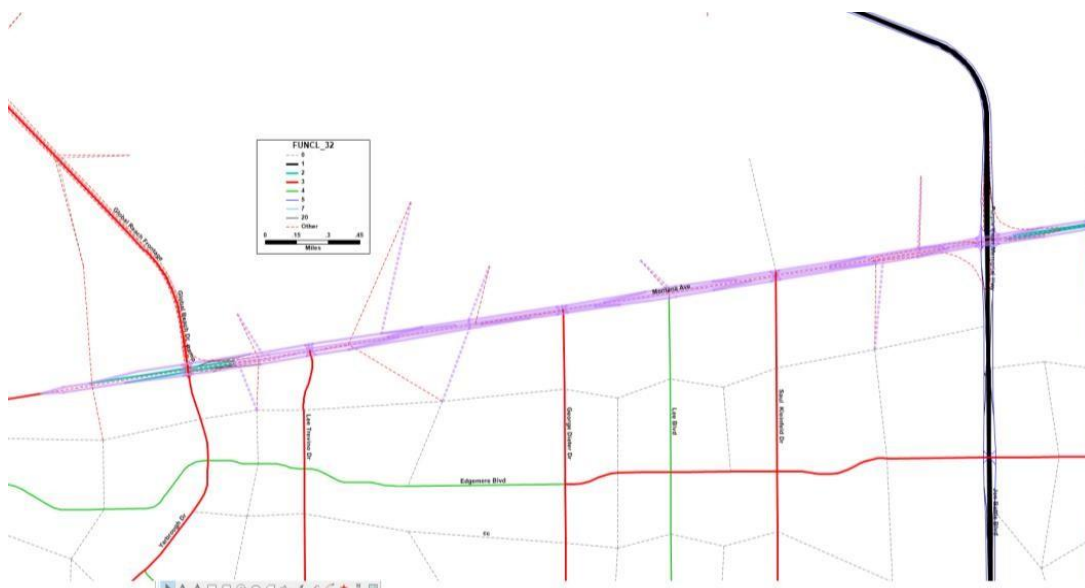
Amendment: Project was modified to remove previously coded adaptive lanes. A total of 13 links were modified. Please refer to the excel matrix for detail information on each link.



10.- Montana Ave. Expressway & Frontage Roads from Global Reach to Zaragoza Dr. (Destino MTP Project ID: F407A-CAP)

This project is not in the RMS 2050 MTP project list. This is a **MODEL UPDATE** to reflect the current conditions. The project was not open to traffic in 2022, therefore, coding of this project was moved to the 2032 network year. Please note, you won't find the project under the Project ID field. To make a selection for this project use field **AMEND_EDIT= "Project F407A-CAP moved to 2032 network"**.

A total of 163 links were modified. Please refer to the excel matrix for detail information on each link.



11.- MODEL UPDATE

A total of 20 links were modified to reflect a MODEL UPDATE based on a review of the aerial photography. Please refer to the excel matrix for detail information on each link.

